

FOR LEASE

730 W. 20th Street ♦ Norfolk, VA 23517



Property Details:

6,025 SF that can be subdivided

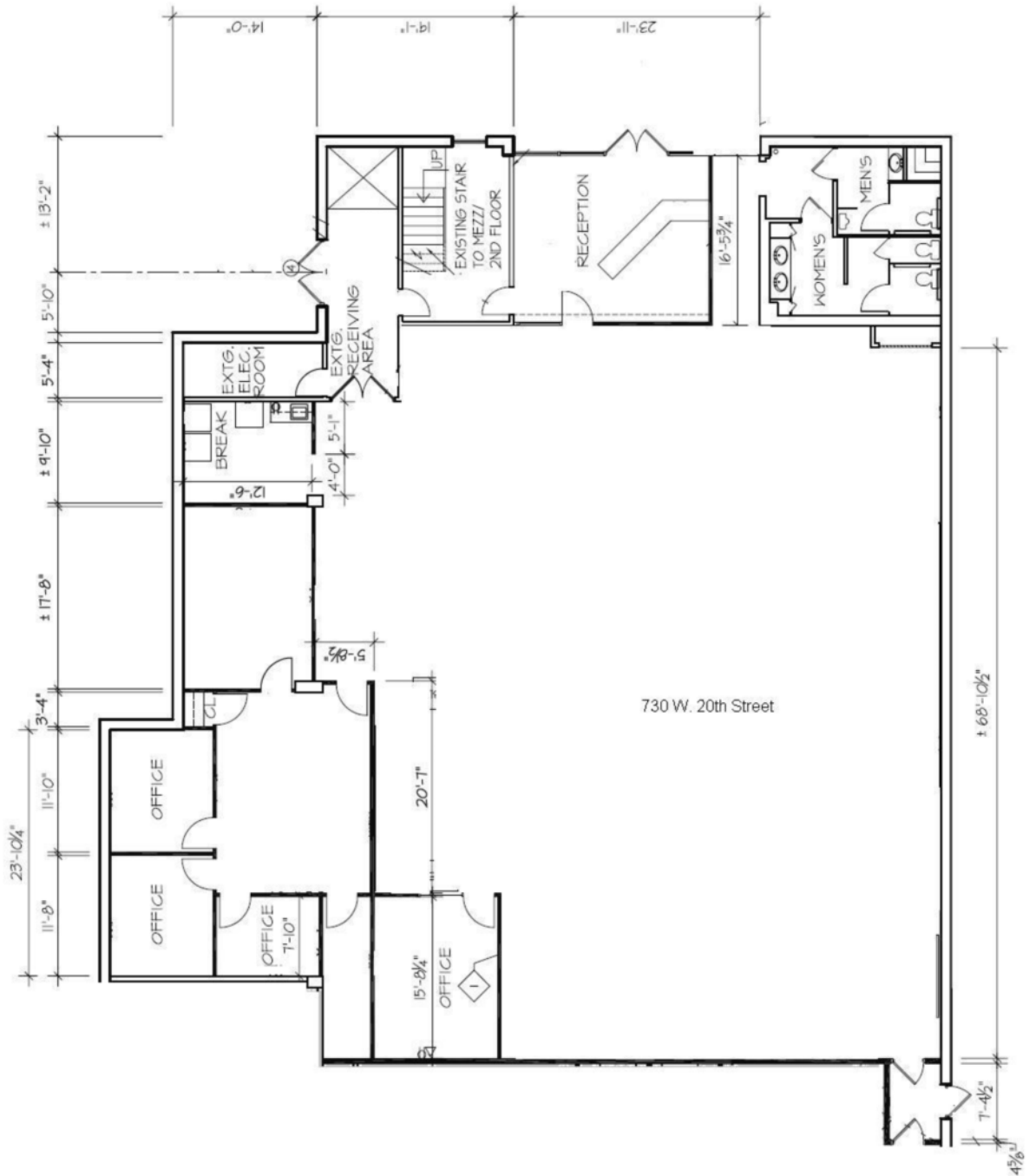
Large open space with several small offices and kitchenette

Located in The Center Shops, a 131,309 square foot shopping center. Anchored by Farm Fresh Supermarket, surrounded by such retailers as Panera Bread, Tropical Smoothie, Hot House Yoga, Luna Maya, and Vitamin Shoppe.

Contact:

Stewart Buckle: sbuckle@morganregroup.com
Michelle O'Keefe: mokeefe@morganregroup.com

223 E. City Hall Avenue, Ste 214 • Norfolk, VA 23510
Phone: (757) 625-2595 • Fax: (757) 625-4001
www.morganregroup.com



Although the information contained herein was provided by sources believed to be reliable, The Morgan Real Estate Group makes no representation, expressed or implied, as to its accuracy and said information is subject to errors, omissions or changes.

The Center Shops Site Plan

THE CENTER SHOPS SITE PLAN

