

FOR LEASE

HISTORIC GHENT - RESTAURANT SPACE

350 W 22nd Street, Ste 114/115 ♦ Norfolk, VA 23517

Area Demographics*:

Population: 239,722

Median Age: 32

Median Income: \$47,800

Avg. Income: \$80,054



Property Details:

- 3,380 SF
- 2nd Generation Restaurant Space
- Outside Dining Area
- Available February 2019

Located in The Palace Shops & Station, a three block shopping and dining destination in the very heart of Historic Ghent, near downtown Norfolk. Approximately 116,000 square feet of restaurants, retail, and professional services offer a unique blend of merchants who cater to a discerning clientele.

**Demographic information compiled by zip code*

Contact:

Joan Park Buckle: jbuckle@morganregroup.com

Michelle O'Keefe: mokeefe@morganregroup.com

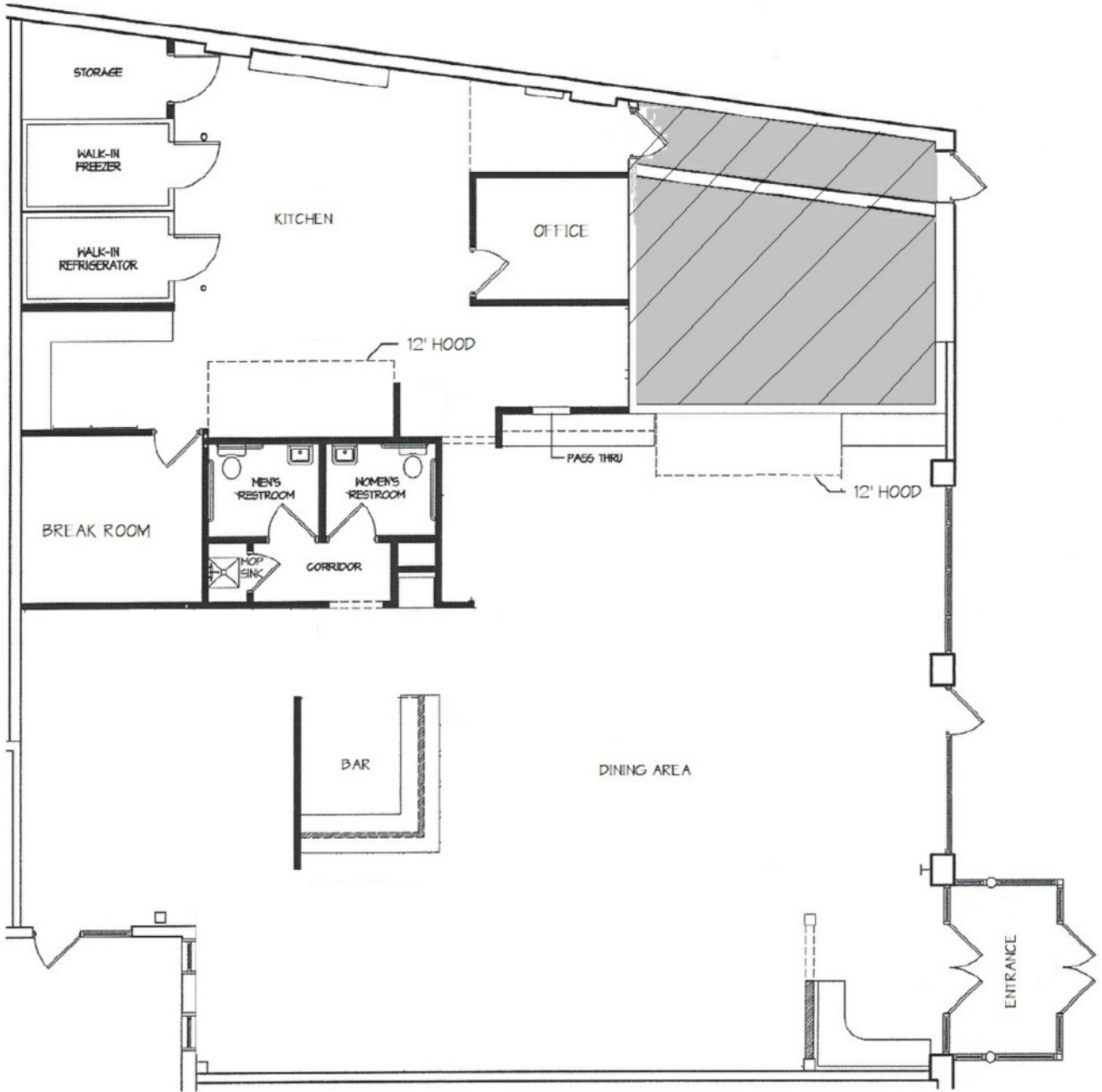
223 E. City Hall Avenue, Ste 214 • Norfolk, VA 23510

Phone: (757) 625-2595 • Fax: (757) 625-4001

www.morganregroup.com



Space Plan



The Palace Shops & Station Site Plan

