

FOR LEASE

350 W. 22nd Street, Ste 101 ♦ Norfolk, VA 23517



Property Details:

- 1,708 SF Retail /Office
- Features exposed ceiling, brick wall, and concrete floors

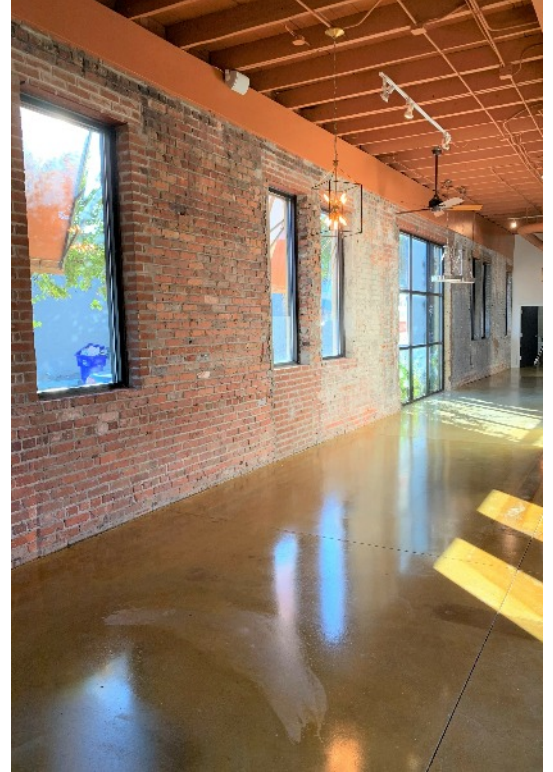
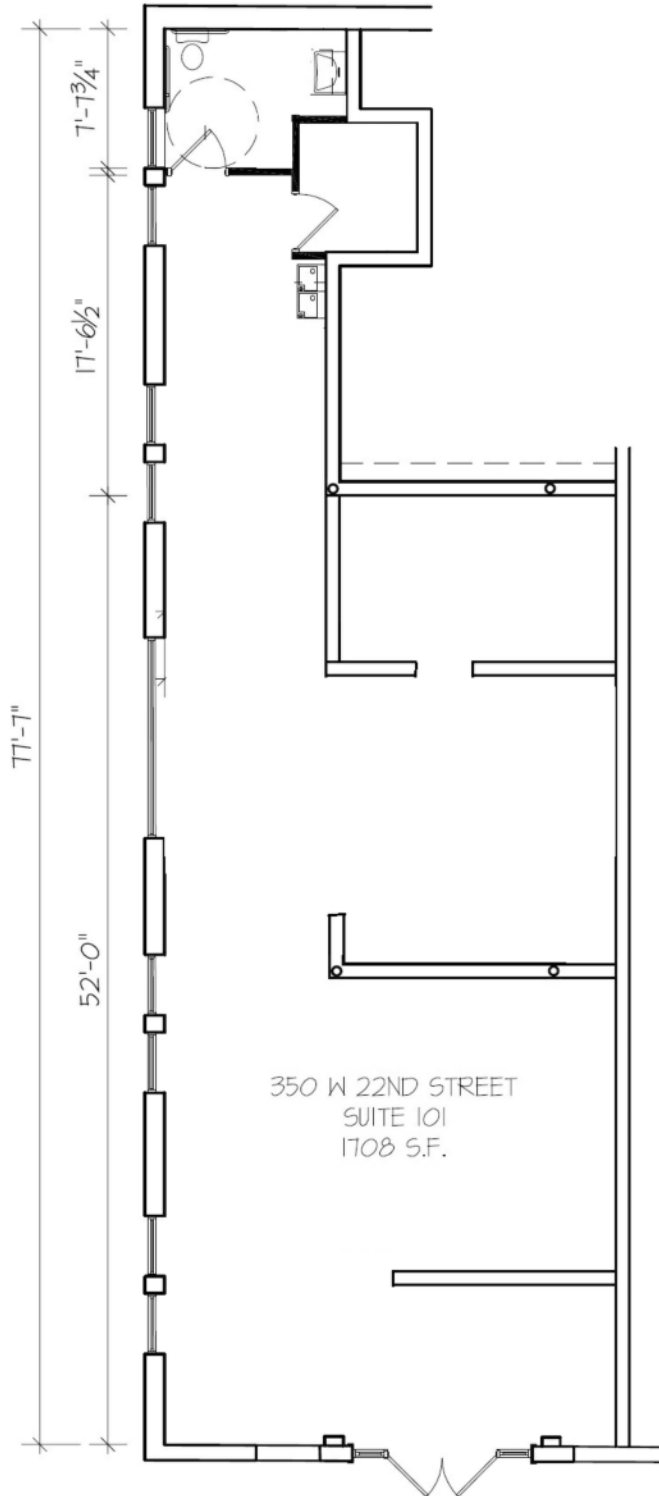
Located in the highly sought after Palace Shops & Station, the premier shopping center in Ghent. Anchored by such retailers as Decorum Furniture, Mattress Firm, and Baker's Crust.

Contact:

Joan Park Buckle: jbuckle@morganregroup.com
Michelle O'Keefe: mokeefe@morganregroup.com

330 W. 22nd Street, Suite 103 • Norfolk, VA 23517
Phone: (757) 625-2595
www.morganregroup.com

Space Plan



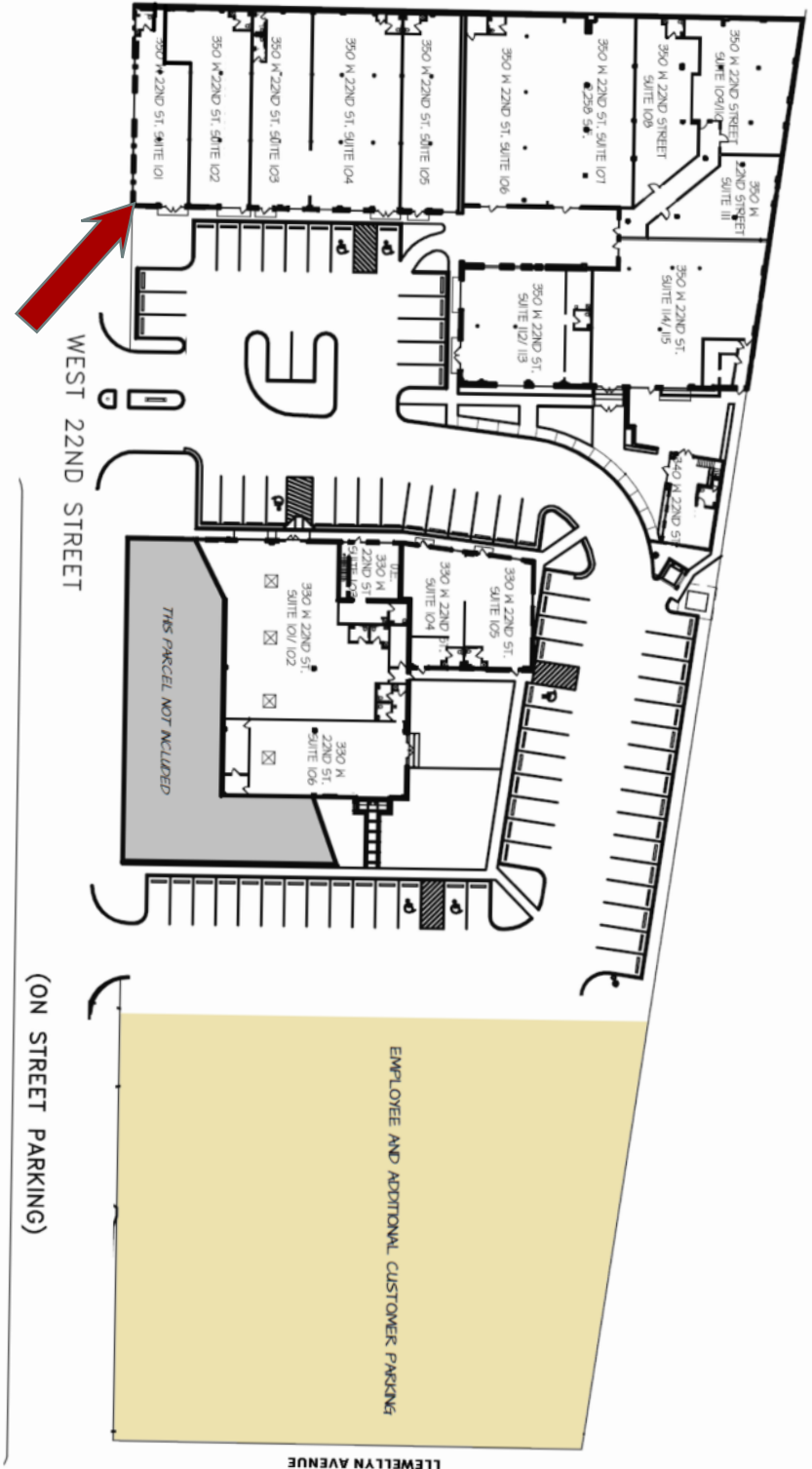
Note: This rendering is not to scale and does not represent the exact layout.

Although the information contained herein was provided by sources believed to be reliable, The Morgan Real Estate Group makes no representation, expressed or implied, as to its accuracy and said information is subject to errors, omissions or changes.

Site Plan

Current Palace Station Tenants:

- Ghent Fit
- G Patton Salon
- Ghent Computer
- Norfolk Integrative Manual Therapy
- Lauren Wolcott CPA
- Net Partners
- Savarna Beauty Spa
- 350 Grace
- Just Cupcakes
- AAA
- Mermaid Winery
- The Morgan Real Estate Group



Area Demographics*:

Population: 239,722
 Median Age: 32
 Median Income: \$47,800
 Avg. Income: \$80,054

**Demographic information compiled by zip codes*